

Feature: Visual Art

Kathleen Ho, MS2 showcases her artwork



Changing of the Seasons

Oil Paint
8 x 10" each

This series of paintings reflects on the human experience and the different seasons of life that shape and mold us, both as individuals and as a community. As I painted each piece, I was reminded of the inherent beauty that exists within ourselves and in the world around us, even during difficult times.

In fact, I began this series during a time of personal grief after the loss of a family member. Painting allowed me to process my emotions and find solace in the beauty that can still be found in each season of life, even in the midst of sorrow. Each painting in this series represents a different stage of my journey, from the pain of loss to the hope of healing and growth.

Through this process, I have come to realize the power of art in helping us cope with difficult emotions and shift our perspective to focus on the light and positivity in life. I hope that these paintings can inspire others to find their own sources of beauty and light during their own seasons of life.

Abyss

Oil on canvas
18 x 20"

I aspire to unite the realms of art and medicine by capturing the awe-inspiring intricacies and captivating beauty of the human eye, a true manifestation of life's enigmatic wonder.



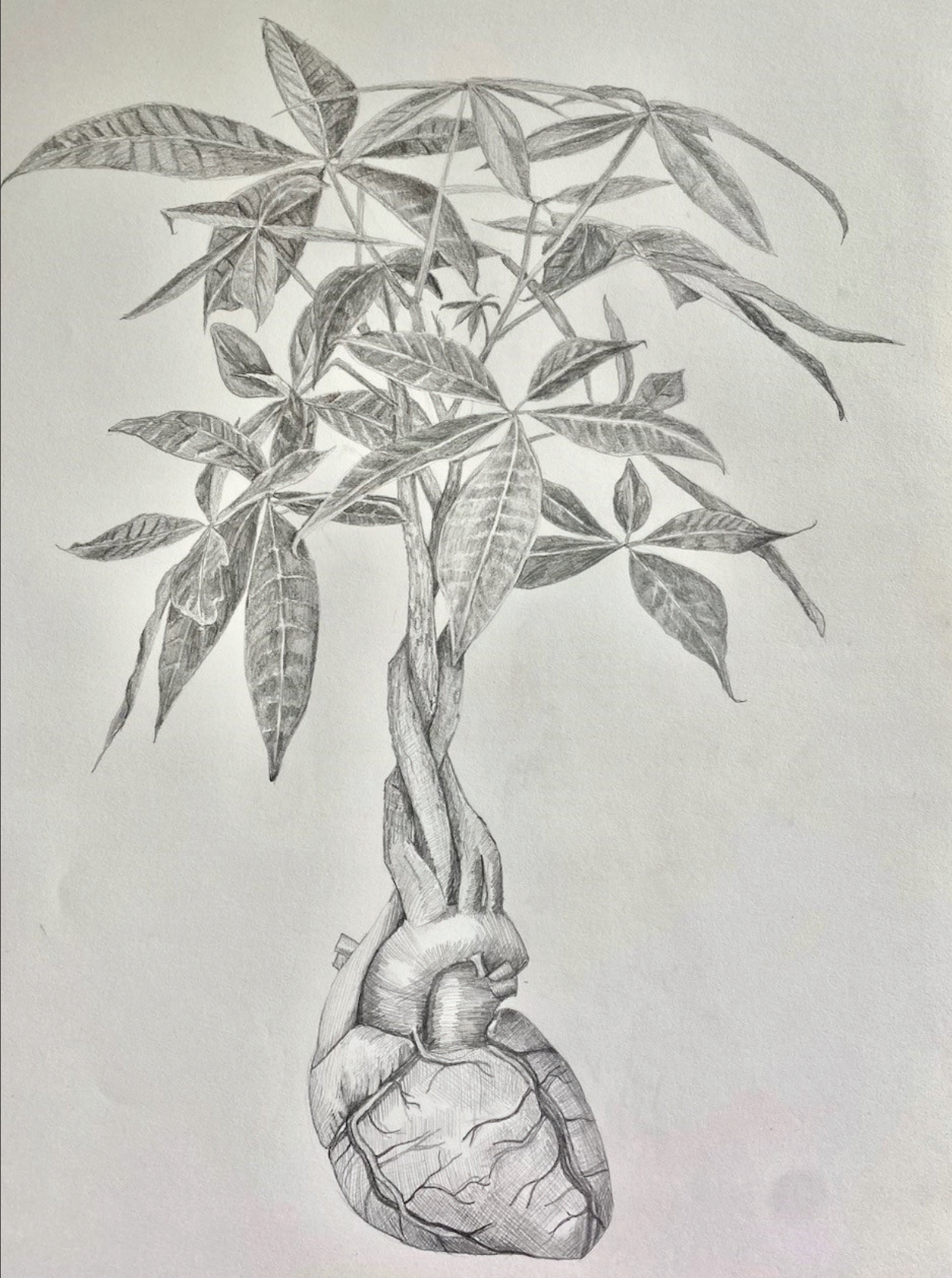


The Inner Garden

Oil Paint
18 x 24"

I began creating this artwork shortly after studying Human Structure, and completed it in April of my first year of medical school. This large-scale project provided me with a much-needed outlet outside of my academic studies, allowing

me to focus on something outside of the classroom while still stimulating my creativity and passion. Through this piece, I gained a newfound appreciation for the beauty and colors of nature, and learned the importance of slowing down and taking time to appreciate the simple things in life.



Truncus Arteriosus

Graphite

18 x 24"

I created this piece during our cardiology block, with inspiration from a plant in my room. I found that drawing the anatomy of the heart helped me perceive the dimensionality of the organ,

its chambers, and blood flow. I titled the piece after the pathology of truncus arteriosus, the failure of the pulmonary artery and aorta to separate in fetal development. In this drawing, these vessels spiral upwards into the tree trunk, as medicine can help those with this pathology live and grow resiliently.