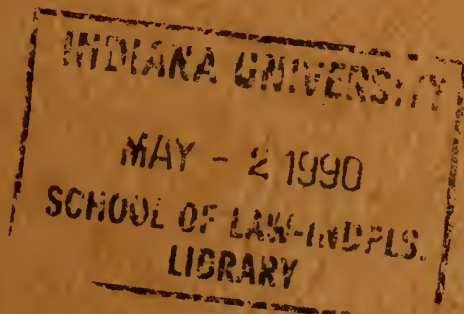


# Indiana Law Review



Volume 22 No. 4 1989



## ARTICLES

**The Right to a Lawyer at a Lineup: Support From  
State Courts and Experimental Psychology**

*Neil C. McCabe*

## NOTES

**Partial Settlement of Multiple Tortfeasor Cases Under  
the Indiana Comparative Fault Act**

**Retroactive Application of Legislatively Enlarged  
Statutes of Limitations for Child Abuse:  
Time's No Bar to Revival**

**"A Modest Proposal"—The Prohibition of All-Adult  
Communities by the Fair Housing  
Amendments Act of 1988**

**The Fraud on the Market Theory: A "Basic"ally Good  
Idea Whose Time Has Arrived,  
*Basic Inc. v. Levinson***

**Institutional Arrangements for Governing the  
Construction of Electric Generating Units:  
A Transaction Cost Analysis**



# LAW REVIEWS ON WESTLAW!

Search thousands of law review and bar journal articles effortlessly on WESTLAW! It's like having a staff of experts always at your command. To answer your questions on Taxation, Business Regulation, Bankruptcy, Securities, and more!

Find relevant articles instantly. Search the full text of articles using descriptive words, titles, author's names, topics or any combination.

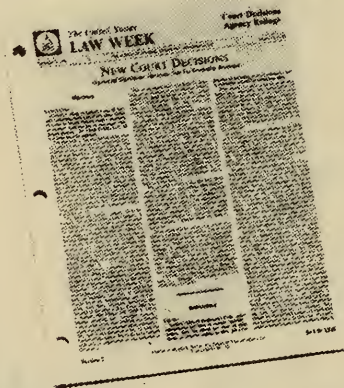
When you want to know what the experts say on your subject, turn to WESTLAW.

Find out more by contacting your West Sales Representative or by calling 1-800-328-0109 (or 0-612-688-3654 collect in MN).

**WESTLAW** 

Key Number Power. A Winning Tradition.

# Decisions, Decisions, Decisions.



Every week, there are over 1,000 decisions rendered by the federal appellate courts, federal district courts, and state courts. Many will affect your clients. But you can't possibly review them all. So how do you decide which to read?

Put BNA's *U.S. Law Week* to work.

Each year the lawyers who edit *Law Week* screen over 50,000 state and federal opinions for you and report digests and text of only the most important ones in all areas of the law.

With *Law Week* every week, it takes just a few minutes to keep up with critical decisions you must know about to successfully represent your clients.

See for yourself. Call for a free sample issue today. Then make your own decision to subscribe. For a sample issue of *Law Week*, call toll-free: 1-800-372-1033.

***People who know law, know BNA.***



THE BUREAU OF NATIONAL AFFAIRS, INC.  
1231 25th Street, N.W., Washington, D.C. 20037

Indiana National

on the subject of options

Investment Option	Minimum Investment	Maturities	Credit	Income	Benefits
Tax-Exempt Municipal Bonds/ Unit Investment Trusts	\$ 5,000 1,000	To 30 Years	Backed by Issuer	Semi-Annual Coupon/ Monthly, Quarterly, Semi-Annual	Exempt from Federal Income Tax for Corporations, and from State and Federal Tax for Individuals.*
Money Market Funds	1,000	Day to Day	Issuing Fund	Monthly	High current income, preservation of capital, easy withdrawal procedures. Share value stability & check writing redemption.
Mutual Funds	250	Open End Funds	Issuing Fund	Monthly	High current return, monthly income, liquidity, high quality portfolios.
U.S. Treasury Bills	10,000	One Year or less	Direct Obligations of U.S. Treasury	Discount to Maturity	High quality, extremely liquid, state tax exempt.*
U.S. Treasury Notes	5,000 1,000	1 - 3 Years 3 - 10 Years	Direct Obligations of U.S. Treasury	Semi-Annual Coupon	High quality, extremely marketable, state tax exempt.*
U.S. Treasury Bonds	1,000	Over 10 Years	Direct Obligations of U.S. Treasury	Semi-Annual Coupon	High quality, extremely marketable, state tax exempt.*
Discount Notes: Primarily Federal Home Loan Banks, FNMA, Federal Farm Credit Banks	10,000	30 to 360 Days	Issuing Agency	At Maturity	May offer higher yields and smaller minimums than Treasury issues. High quality and extremely liquid.*
Federal Farm Credit, FNMA, Federal Home Loan Banks	1,000 5,000 10,000	6 Months to 30 Years	Issuing Agency	At Maturity or Semi-Annual Coupon	May offer higher yields and smaller minimums than Treasury issues. High quality and good marketability.*
Bankers Acceptances	100,000	10 Days to 270 Days	Guaranteed by Issuing Bank	Discount to Maturity	High quality and extremely liquid.*
Commercial Paper	100,000	To 270 Days	Backed by Issuer	At Maturity or Discount to Maturity	High yields, good marketability, highly liquid.*

\* Possible market risk if sold before maturity date.

# Have you considered all your options?

## Investment banking from Indiana National

You may not have thought of Indiana National as a source of investment banking. But we're one of Indiana's major marketers of tax-exempt municipal bonds and notes, government and agency securities.

## Reaching your investment goals

Our account executives have proven their capabilities and market insights by assisting clients in the acquisition of over \$32 billion in fixed income securities during the last five years.

And because they focus on safety, liquidity and rate of return, they provide the kind of securities that meet clients' investment objectives.

## Managing your investment plan

At Indiana National you receive individualized attention to your investment goals. And you benefit from our decades of experience in personal service and prompt execution of trades.

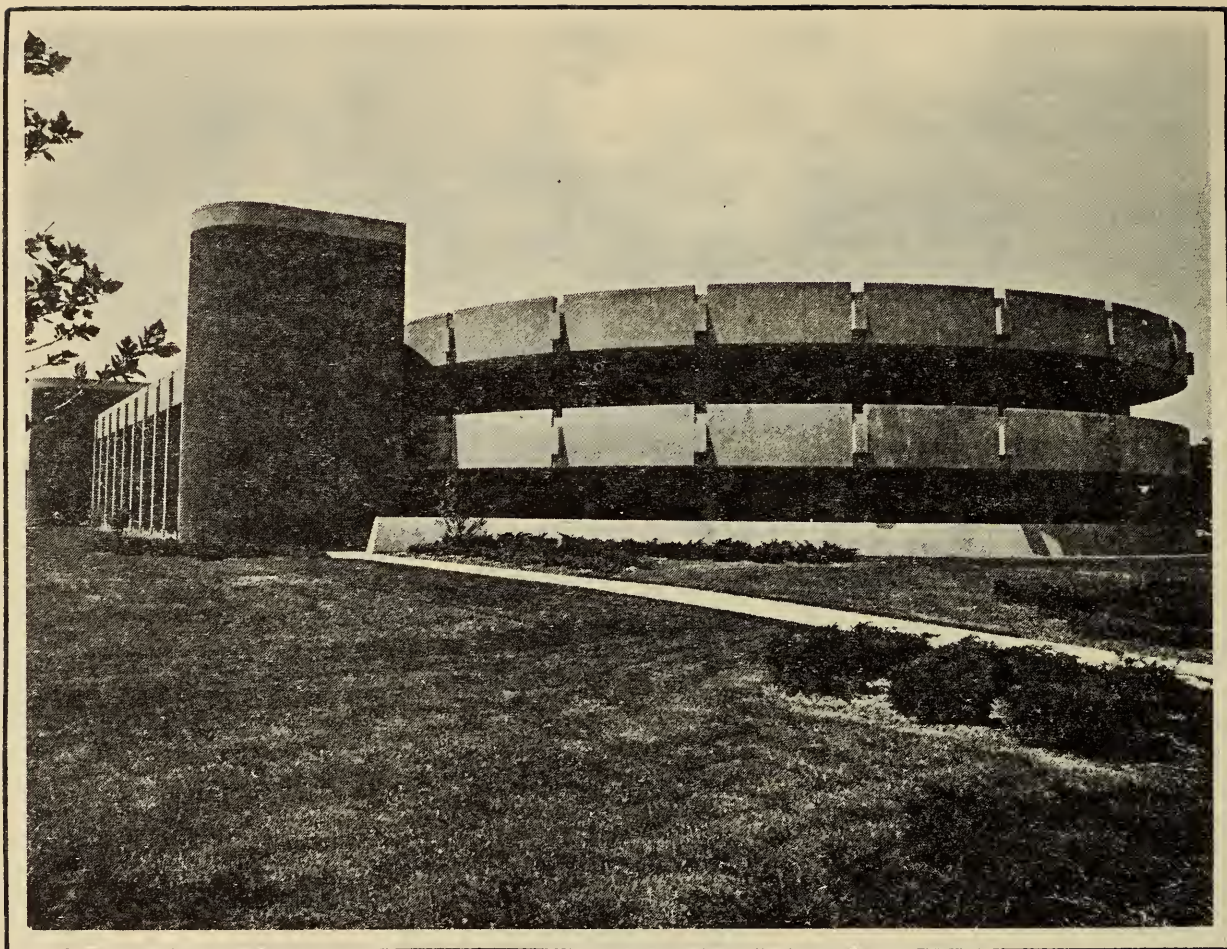
The next time you're ready to make an investment, think of Indiana National. Because, when it comes to meeting your investment objectives, we've got all the options.

Call 1-800-382-1102 or (317) 266-6829 for more information.



**Indiana National**  
Investment Banking Division

Member FDIC



---

**Please enter my subscription to the  
INDIANA LAW REVIEW**

NAME \_\_\_\_\_

ADDRESS \_\_\_\_\_

\_\_\_\_\_

\_\_\_\_\_

Enclosed is \$ \_\_\_\_\_ for \_\_\_\_\_ subscriptions.

Bill me for \_\_\_\_\_ subscriptions.

Mail to:

INDIANA LAW REVIEW  
INDIANA UNIVERSITY  
SCHOOL OF LAW—INDIANAPOLIS  
735 West New York Street  
Indianapolis, Indiana 46202

Subscription Rates (one year):

Regular, \$22; Foreign, \$25; Survey, \$15;  
Single Issue, \$7

# Indiana Law Review

Volume 22

1989

Number 4

Copyright © 1989 by the Trustees of Indiana University

## TABLE OF CONTENTS

### Articles

- The Right to a Lawyer at a Lineup: Support From State Courts and Experimental Psychology .....*Neil C. McCabe* 905

### Notes

- Partial Settlement of Multiple Tortfeasor Cases Under the Indiana Comparative Fault Act ..... 939
- Retroactive Application of Legislatively Enlarged Statutes of Limitations for Child Abuse: Time's No Bar to Revival ..... 989
- "A Modest Proposal"—The Prohibition of All-Adult Communities by the Fair Housing Amendments Act of 1988 ..... 1021
- The Fraud on the Market Theory: A "Basic"ally Good Idea Whose Time Has Arrived, *Basic Inc. v. Levinson* ..... 1061
- Institutional Arrangements for Governing the Construction of Electric Generating Units: A Transaction Cost Analysis ..... 1085

Volume 22

1989

Number 4

The INDIANA LAW REVIEW (ISSN 0090-4198) is the property of Indiana University and is published quarterly by the Indiana University School of Law—Indianapolis, which assumes complete editorial responsibility thereof. Subscription rates: one year \$22; foreign \$25. Please notify us one month in advance of any change in address and include both old and new addresses with zip codes to ensure delivery of all issues. Send all correspondence to Editorial Assistant, Indiana Law Review, Indiana University School of Law—Indianapolis, 735 West New York Street, Indianapolis, Indiana 46202. Publication office: 735 West New York Street, Indianapolis, Indiana 46202. Second class postage paid at Indianapolis, Indiana 46201.

POSTMASTER: Send address changes to INDIANA LAW REVIEW, 735 West New York Street, Indianapolis, Indiana 46202.

# Indiana Law Review

---

Volume 22

1989

---

*Editor-in-Chief*

Robert G. Solloway

*Executive Editors*

*Articles and Production*

Carol Kirk

*Notes and Topics*

Katharine Liell Polito

*Articles Editors*

Rebecca S. Bowman

Madonna F. McGrath

Debra Linn Burns

Peggy J. Naile

Cynthia Pearson Purvis

*Business Editor and Survey Coordinator*

Robert Davis

*Note Development Editors*

Bruce J. Alvarado

Catherine A. Kling

Douglas E. Cressler

Olivia A. Napariu

Karen Glasser Deane

Douglas K. Norman

---

*Associate Editors*

Rene F. Barnard

Kisti L. Good

Carolyn A. Bielefeld

Barbara E. Lollar

Raymond Charles Bowyer

Karen R. McClure

Thomas A. Brodnik

Deborah B. Noah

Gary L. Chapman

Paul F. Reidy

L.S. John Ciecimirski

Mara J. Snyder

Jane A. B. Eppink

Clare M. Sproule

Brian S. Fennerty

Darlene M. Stephens

E. Scott Treadway

---

*Editorial Assistant*

Amy Morrison Grubbs

*Faculty Advisor*

Paul J. Galanti



## Indiana University School of Law—Indianapolis

### 1989-1990 ADMINISTRATIVE OFFICERS AND FACULTY

#### Administrative Officers

THOMAS M. EHRlich, LL.B., *President of the University*  
GERALD L. BEPKO, LL.M., *Vice-President*  
NORMAN LEFSTEIN, LL.B., *Dean*  
JAMES F. BINDLEY, J.D., *Assistant Dean for Administration*  
DEBRA A. FALENDER, J.D., *Acting Assistant Dean of Administration*  
LAWRENCE P. WILKINS, LL.M., *Associate Dean for Academic Affairs*

#### Faculty

THOMAS B. ALLINGTON, *Professor. B.S., University of Nebraska, 1964; J.D., 1966; LL.M., New York University, 1971.*  
EDWARD P. ARCHER, *Professor. B.M.E., Rensselaer Polytechnic Institute, 1958; J.D., Georgetown University, 1962; LL.M., 1964.*  
JAMES F. BAILEY, III., *Professor and Director of Law Library. A.B., University of Michigan, 1961; J.D., 1964; M.A.L.S., 1970.*  
GERALD L. BEPKO, *Vice President and Professor. B.S., Northern Illinois University, 1962; J.D., IIT/Chicago-Kent College of Law, 1965; LL.M., Yale University, 1972.*  
JAMES F. BINDLEY, *Assistant Dean for Administration and Director of Placement & Development, B.A., Loyola University, 1969; J.D., University of Kentucky, 1972.*  
PAUL N. COX, *Professor. B.S., Utah State University, 1972; J.D., University of Utah, 1974; LL.M., University of Virginia, 1980.*  
CLYDE HARRISON CROCKETT, *Professor. A.B., University of Texas, 1962; J.D., 1965; LL.M., University of London (The London School of Economics and Political Science), 1972.*  
DEBRA A. FALENDER, *Professor & Associate Dean for Student Affairs. A.B., Mount Holyoke College, 1970; J.D., Indiana University, 1975.*  
DAVID A. FUNK, *Professor. A.B., College of Wooster, 1949; J.D., Case Western Reserve University, 1951; M.A., The Ohio State University 1968; LL.M., Case Western Reserve University, 1972; LL.M., Columbia University, 1973.*  
PAUL J. GALANTI, *Professor. A.B., Bowdoin College, 1960; J.D., University of Chicago, 1963.*  
HELEN P. GARFIELD, *Professor. B.S.J., Northwestern University, 1945; J.D., University of Colorado, 1967.*  
HAROLD GREENBERG, *Professor. A.B., Temple University, 1959; J.D., University of Pennsylvania, 1962.*  
JEFFREY W. GROVE, *Professor. A.B., Juniata College, 1965; J.D., George Washington University, 1969.*  
WILLIAM F. HARVEY, *Carl M. Gray Professor of Law. A.B., University of Missouri, 1954; J.D., Georgetown University, 1959; LL.M., 1961.*  
PAUL T. HAYDEN, *Assistant Professor. B.A., Yale University, 1979; J.D., University of California, Los Angeles, 1984.*  
W. WILLIAM HODES, *Professor. A.B., Harvard College, 1966; J.D., Rutgers Newark, 1969.*  
LISA C. IKEMOTO, *Assistant Professor. B.A., University of California, Los Angeles, 1984; J.D., University of California, Davis, 1987; L.L.M., Columbia, 1989.*  
LAWRENCE A. JEGEN, III., *Thomas F. Sheehan Professor of Tax Law and Policy, 1982. A.B., Beloit College 1956; J.D., The University of Michigan 1959; M.B.A., 1960, LL.M., Harvard University, 1963.*  
HENRY C. KARLSON, *Professor. A.B., University of Illinois, 1965; J.D., 1968; LL.M., 1977.*  
WILLIAM ANDREW KERR, *Professor. A.B., West Virginia University, 1955. J.D., 1957, LL.M., Harvard University, 1958; D.B., Duke University, 1968.*  
ELEANOR D. KINNEY, *Associate Professor. A.B., Duke University, 1969; M.A., University of Chicago, 1970; J.D., Duke University, 1973.*  
WALTER W. KRIEGER, *Associate Professor. A.B., Bellarmine College, 1959; J.D., University of Louisville, 1962; LL.M., George Washington University, 1969.*  
NORMAN LEFSTEIN, *Dean and Professor. LL.B., University of Illinois, 1961; LL.M., Georgetown University, 1964.*

- DAVID P. LEONARD, *Professor. B.A., University of California at San Diego, 1974; J.D., UCLA School of Law, 1977.*
- WILLIAM E. MARSH, *Professor. B.S., University of Nebraska, 1965; J.D., 1958.*
- SUSANAH M. MEAD, *Professor. B.A., Smith College, 1969; J.D., Indiana University, 1976.*
- MARY H. MITCHELL, *Professor. A.B., Butler University, 1975; J.D., Cornell Law School, 1978.*
- JAMES P. NEHF, *Assistant Professor. B.A., Knox College, 1979; J.D., University of North Carolina, 1983.*
- DAVID R. PAPKE, *Associate Professor. A.B., Harvard College, 1969; J.D., Yale Law School, 1973; M.A., in American Studies, Yale University, 1973; Ph.D., in American Studies, The University of Michigan, 1984.*
- RONALD W. POLSTON, *Professor. B.S., Eastern Illinois University, 1953; LL.B., University of Illinois, 1958.*
- KENNETH M. STROUD, *Professor. A.B., Indiana University, 1958; J.D., 1961.*
- JAMES W. TORKE, *Professor. B.S., University of Wisconsin, 1963; J.D., 1968.*
- JOE A. TUCKER, *Assistant Professor. B.A., Houston, 1977; J.D., University of Texas, 1981.*
- JAMES PATRICK WHITE, *Professor of Law. A.B., University of Iowa, 1953; J.D., 1956; LL.M., George Washington University, 1959.*
- LAWRENCE P. WILKINS, *Professor. B.A., The Ohio State University, 1968; J.D., Capital University Law School, 1973; LL.M., University of Texas School of Law, 1974.*
- MARY WOLF, *Director of Clinical Programs, B.A., Saint Xavier College, 1969; J.D., University of Iowa College of Law, 1974.*

#### **Emeriti**

- AGNES P. BARRETT, *Associate Professor Emeritus. B.S., Indiana University, 1942; J.D., 1964.*
- CLEON H. FOUST, *Professor Emeritus. A.B., Wabash College, 1928; J.D., University of Arizona, 1933.*
- JOHN S. GRIMES, *Professor of Jurisprudence Emeritus. A.B., Indiana University, 1929; J.D., 1931.*
- MELVIN C. POLAND, *Cleon H. Foust Professor of Law Emeritus. B.S., Kansas State University, 1940; LL.B., Washburn University, 1949; LL.M., The University of Michigan, 1950.*
- R. BRUCE TOWNSEND, *Cleon H. Foust Professor of Law Emeritus, A.B., Coe College, 1938; J.D., University of Iowa, 1940.*

#### **Legal Writing Instructors**

- DEBORAH B. MCGREGOR, *B.A., University of Evansville, 1973; J.D., Georgetown University Law Center, 1983.*
- TRACY A. NELSON, *B.A., University of Denver, 1981; J.D., Indiana University, Indianapolis, 1985.*
- DAVID A. REIDY, Jr., *B.A., DePauw University, 1984; J.D., Indiana University, Bloomington 1987.*
- JOAN RUHTENBERG, *Director of Legal Writing. B.A., Mississippi University Women, 1959; J.D., Indiana University, 1980.*

#### **Law Library Staff**

- MINDE C. GLENN, *Reference Librarian, B.A., Western Michigan University, 1979; M.L.S., Indiana University, 1980.*
- WENDELL E. JOHNTING, *Asst. Director for Technical Services, A.B., Taylor University, 1974; M.L.S., Indiana University, 1975.*
- MAHNAZ K. MOSHFEGH, *Acquisitions/Serials Librarian, B.A., National University of Iran, 1966; M.S., Tehran University, 1971; M.A., Ball State University, 1977; M.L.S., Indiana University, 1983; Ph.D., Indiana University, 1988.*
- KIYOSHI OTSU, *Catalog Librarian, A.A., Parkland College, 1976; A.B., University of Illinois, 1980; M.S., 1982; C.A.S., 1983.*
- MERLIN P. WHITEMAN, *Asst. Director for Readers' Services, B.A., Hope College, 1973; M.L.S., Indiana University, 1974; J.D., 1982.*