

Indiana Law Review

VOLUME 16 • 1983 • NUMBER 1

INDIANA UNIVERSITY

JAN 18 1983

SCHOOL OF LAW LIBRARY



Dedications Gerald L. Bepko

1982 Survey of Recent Developments in Indiana Law

- I. Administrative Law *Scott A. Smith*
- II. Business Associations *Paul J. Galanti*
- III. Civil Procedure and Jurisdiction *William F. Harvey*
- IV. Commercial Law *Gerald L. Bepko*
- V. Constitutional Law *Carlyn E. Johnson*
- VI. Criminal Law and Procedure *Stephen J. Johnson*
- VII. Domestic Relations *James A. Buck*
- VIII. Evidence *Henry C. Karlson*
- IX. Insurance *John C. Trimble*
- X. Labor Law *Edward P. Archer*
- XI. Products Liability *Jordan H. Leibman*
- XII. Professional Responsibility *Donald L. Jackson*
- XIII. Property *Walter W. Krieger*
- XIV. Secured Transactions and Creditors' Rights *R. Bruce Townsend*
- XV. Social Security and Public Welfare *R. George Wright*
- XVI. Taxation *John W. Boyd*
- XVII. Torts *Susanah M. Mead*
- XVIII. Trusts and Decedents' Estates *Debra A. Falender*
- XIX. Workers' Compensation *Terrence Coriden*

*Registered Professional
Reporters*

JOHN E. CONNOR & Associates

(317) 632-5533

204 UNION FEDERAL BUILDING

Indianapolis, Ind. 46204

Reference: MARTINDALE-HUBBELL

INDIANA LAW REVIEW

We are pleased to announce that Volume 16,
Number 2, will contain articles on:

**Jurisdiction Under the Uniform Child Custody Act,
and Sports Law**

Subscription Rates: one year, \$15.00;
foreign, \$18.50; student, \$13.00.

Published Four Times Yearly

Send orders to: Business Manager
Indiana Law Review
Indiana University School of Law, Indianapolis
735 W. New York Street, Indianapolis, Indiana 46202

**For personalized
service...
you need to know
the right banker.**

That's what our Personal Services Bankers like Don Gootee and his associates can provide a busy professional like you. They can expedite action on your request for *any* service and provide you with *direct* access to personal and business loans, long and short term investments, depository services, trust services, financial analysis — or any of the many services that could benefit you. If you need things to be coordinated with your attorney, accountant or insurance agent — that will be done too.

Only Indiana National offers this concentration of banking resources through one specialist for the professional — at a time and location that's convenient to *you*.

Get to know the *right* people. Call Don and ask for your own Personal Services Banker.
317/266-6157. Personal Services Banking / One Indiana Square, Indianapolis, IN 46266.

Indiana National

Pioneers in Banking
Member FDIC





.....

**Please enter my subscription to the
INDIANA LAW REVIEW**

NAME _____

ADDRESS _____

Enclosed is \$ _____ for _____ subscriptions.

Bill me for _____ subscriptions.

Mail to:

**INDIANA LAW REVIEW
INDIANA UNIVERSITY
SCHOOL OF LAW - INDIANAPOLIS
735 West New York Street
Indianapolis, Indiana 46202**

Subscription Rates (one year):

Regular, \$15.00; Foreign, \$18.50; Survey, \$9.00

Indiana Law Review

Volume 16

1983

Number 1

Copyright © 1982 by the Trustees of Indiana University

1982 Survey of Recent Developments in Indiana Law

Table of Cases	vi
Dedication: On the Appointment of Dean Gerald L. Bepko	
I. Administrative Law	Scott A. Smith 1
A. Due Process	1
B. Exhaustion of Administrative Remedies	9
C. Primary Jurisdiction	11
D. The Requirement of Findings	11
E. Scope of Judicial Review	14
F. Delegation of Legislative Power	22
G. Enforcement of Agency Orders	23
II. Business Associations	Paul J. Galanti 25
A. Shareholder Derivative Actions	25
B. Creation of Limited Partnerships	29
C. Securities Act—Receiver	32
D. Indiana Takeover Offers Act	34
E. Corporate Service of Process	37
F. Buy-Sell Agreements and Irrevocable Proxies	39
G. Definitions of a Security	41
H. Statutory Developments	46
III. Civil Procedure and Jurisdiction	William F. Harvey 57
A. Introduction	57
B. Jurisdiction, Process, and Venue	57
C. Pleadings and Pre-Trial Motions	63
D. Parties and Discovery	67
E. Trial and Judgments	71
F. Appeals	74
G. 1982 Indiana Trial Rule Amendments	78

Volume 16

Winter 1983

Number 1

The INDIANA LAW REVIEW (ISSN 0090-4198) is the property of Indiana University and is published quarterly by the Indiana University School of Law—Indianapolis, which assumes complete editorial responsibility therefor. Subscription rates: one year \$15.00; foreign \$18.50. Back issues are available from Fred B. Rothman & Co., 10368 W. Centennial Rd., Littleton, Co. 80127. Please notify us one month in advance of any change of address and include both old and new addresses with zip codes to ensure delivery of all issues. Send all correspondence to Editorial Assistant, Indiana Law Review, Indiana University School of Law—Indianapolis, 735 West New York Street, Indianapolis, Indiana 46202. Publication office: 735 West New York Street, Indianapolis, Indiana 46202. Second class postage paid at Indianapolis, Indiana 46201.

POSTMASTER: Send address changes to INDIANA LAW REVIEW, 735 West New York Street, Indianapolis, Indiana 46202.

IV. Commercial Law	<i>Gerald L. Bepko</i>	83
A. <i>Scope of UCC Article 2</i>		83
B. <i>Warranty Booklet Received After Sale</i>		85
C. <i>Remedy Limitations</i>		87
D. <i>Buyer's Remedies</i>		93
E. <i>Amendments to the Indiana Deceptive Consumer Sales Act</i>		95
F. <i>Amendments to Indiana's Uniform Consumer Credit Code</i>		97
V. Constitutional Law	<i>Carlyn E. Johnson</i>	101
A. <i>Equal Protection</i>		101
B. <i>First Amendment—Freedom of Speech</i>		108
C. <i>Fifth Amendment—Self-Incrimination</i>		111
D. <i>Due Process</i>		112
E. <i>Guarantee of Remedy for Injury</i>		117
VI. Criminal Law and Procedure	<i>Stephen J. Johnson</i>	119
A. <i>Arrest</i>		119
B. <i>Initial Hearings</i>		132
C. <i>Omnibus Date</i>		139
D. <i>Indictments and Informations</i>		145
E. <i>Public Trial—Closure</i>		147
F. <i>Crimes</i>		148
G. <i>Search and Seizure</i>		155
H. <i>Plea Bargaining—Guilty Pleas</i>		159
I. <i>Sentencing</i>		164
VII. Domestic Relations	<i>James A. Buck</i>	171
A. <i>Termination of Parental Rights</i>		171
B. <i>Child Custody</i>		172
C. <i>Child Support</i>		175
D. <i>Dissolution</i>		181
E. <i>Paternity</i>		188
VIII. Evidence	<i>Henry C. Karlson</i>	191
A. <i>Hearsay</i>		191
B. <i>Character Evidence</i>		196
C. <i>Evidence of Business Custom</i>		199
D. <i>Judicial Notice</i>		200
E. <i>Cross-Examination</i>		203
IX. Insurance	<i>John C. Trimble</i>	205
A. <i>Arson Cases</i>		205
B. <i>Automobile Cases</i>		212
C. <i>General Liability Cases</i>		218
D. <i>Life Insurance Cases</i>		221
E. <i>Statutory Developments</i>		222
X. Labor Law	<i>Edward P. Archer</i>	225
A. <i>Employment Contracts—Employment at Will</i>		225
B. <i>Bargaining for Non-Teacher Public Employees</i>		228
C. <i>Arbitration Appeals</i>		230
XI. Products Liability	<i>Jordon H. Leibman</i>	241
A. <i>Introduction</i>		241
B. <i>Substantial Change</i>		241
C. <i>Product Misuse and Substantial Change as Intervening Causation</i> ...		245
D. <i>The Seller as Guarantor of Product Quality</i>		253
E. <i>Open and Obvious Dangers</i>		254
XII. Professional Responsibility	<i>Donald L. Jackson</i>	265
A. <i>Professional Responsibility</i>		265

B. Professional Liability	275
XIII. Property	<i>Walter W. Kreiger</i> 283
A. Adverse Possession	285
B. Bailment	288
C. Easements and Restrictive Covenants	290
D. Landlord and Tenant	295
E. Mines and Minerals	298
F. Real Estate Transactions	306
G. Slander of Title	312
XIV. Secured Transactions and Creditors' Rights	<i>R. Bruce Townsend</i> 315
A. Secured Transactions	316
B. Creditors' Rights	325
C. Miscellaneous	336
XV. Social Security and Public Welfare	<i>R. George Wright</i> 339
A. Indiana Medicaid Law	339
B. Uncompensated Hill-Burton Costs as Reimbursable Medicare Costs ..	344
C. Tightening of Welfare Benefit Standards	345
D. Local Welfare Assistance	347
E. Social Security Disability Claims	348
F. Statutory Developments	352
XVI. Taxation	<i>John W. Boyd</i> 355
A. Introduction	355
B. Sales and Use Tax Decisions	356
C. Gross Income Tax Decisions	359
D. Judicial Review of State Tax Board Assessments	367
E. Legislative Developments	370
XVII. Torts	<i>Susanah M. Mead</i> 377
A. Negligence	377
B. Proximate Cause	389
C. Damages	394
D. Loss of Consortium	398
E. Seat Belt Defense	400
F. Medical Malpractice	401
G. Tortious Interference With Contract	406
H. Malicious Prosecution	407
I. Indiana Tort Claims Act	411
XVIII. Trusts and Decedents' Estates	<i>Debra A. Falender</i> 415
A. Decedents' Estates	415
B. Trusts	422
C. Powers of Appointment	425
D. Guardianships	431
XIX. Workers' Compensation	<i>Terrence Coriden</i> 433
A. Jurisdiction	433
B. Statute of Limitations	434
C. Scope of Employer's Liability	436
D. Injuries Caused by Employment-Related Accidents	439
E. Employee's Civil Actions Against Co-Employees, Third Parties, and Employer's Insurers	441
F. Employer's Bad Faith	443
G. Discovery Matters	443
H. Evidentiary Matters	444

TABLE OF CASES

A

Adams v. City of Fort Wayne, 67
Alcoa v. Review Board of the Indiana
Employment Security Division, 7
Allen v. Amben Manor Apartments
Partnership, 29
American Economy Insurance Co. v.
Liggett, 209
American Family Mutual Insurance
Co. v. Ramsey, 212
American Fletcher National Bank &
Trust Co. v. Pavilion, Inc., 336
American Underwriters, Inc. v. Curtis, 329
Anderson Federation of Teachers,
Local 519 v. Alexander, 238
Arnold v. Sendak, 101
Associates Financial Services v. Knapp, 65

B

Baker v. American States Insurance
Co., 442
Baker v. Compton, 20
Barrick Realty Co. v. Bogan, 306
Bayes v. Isenberg, 325
Beer Distributor of Indiana, Inc. v.
State *ex rel.* Alcoholic Beverage
Commission, 21
Bemis Co. v. Rubush, 254
Beneficial Finance Co. v. Wegmiller
Bender Lumber Co., 325
Blaircom v. Hires, 284 n.3
Blue v. Beach, 23
Blue Valley Turf Farms v. Realestate
Marketing & Development, Inc., 307
Board of Commissioners v. Hatton, 386
Bond v. Stanton, 343
Bossard v. McCue, 71
Bowling v. Fountain County Highway
Department, 440
Breedlove v. Breedlove, 70
Breeze v. Breeze, 76, 424
Bridges v. Kentucky Stone Co., 389
Brokus v. Brokus, 172, 181
Brown v. Smith, 341
Brown v. State, 203
Bunker v. National Gypsum Co., 434
Byrer v. State, 197

C

California v. Byers, 127
Campbell v. Eli Lilly & Co., 225
Canfield v. Rapp & Son, Inc., 41
Carmichael v. Silbert, 402
Carr v. Hoosier Photo Suppliers,
Inc., 90, 288
Carrel v. Ellingwood, 415
Carter v. State, 191
Cassiday v. Schweiker, 348
Cato v. David Excavating Co., 326
Chambers v. State, 158
City of Anderson v. Associated Furniture
& Appliances, Inc., 21
City of Gary v. Stream Pollution
Control Board, 23
City of Milwaukee v. Illinois, 57
Clarkson v. Department of Insurance, 14
Claus v. Smith, 339
Coachmen Industries, Inc. v. Yoder, 434,
443, 444
Coak v. Rebber, 328
Coleman v. Alabama, 137
Colonial Discount Corp. v. Bowman, 323
Conder v. Hull Lift Truck, Inc., 245
Cook v. Equitable Life Assurance Society
of the United States, 221
Cowell v. Duckworth, 271
Craven v. Niagra Machine & Tool
Works, Inc., 241
Cross v. State *ex rel.* Linton, 8
Crumpacker v. Crumpacker, 76
Cummins v. Schweiker, 350
Curry v. Orwig, 312, 317

D

Dawson v. St. Vincent's Health &
Hospital Care Center, 74
Decatur County Ag-Services, Inc.
v. Young, 394
Deckard v. State, 158
Department of Financial Institutions
v. Beneficial Finance Co., 337
DeVaney v. State, 152
Dolan v. State, 159
Dowdell v. State, 191

Dowell v. Fleetwood, 286
 Downer v. State, 197
 Downing v. Dial, 320
 Drake Insurance Co. v. Carroll
 County Sheriff's Department, 219

E

Economy Fire & Casualty Co.
 v. Beeman, 218
 Edgar v. Mite Corp., 36
 Edward Rose of Indiana v. Fountain, 296
 Ellis v. George Ryan Co., 290 n.27, 316
 Ellsworth v. Homemakers Finance
 Services, Inc., 323
 Enderle v. Sharman, 292
 Estate of Mathes v. Ireland, 377
 Evans v. Buchanan, 107
 Evans v. Stanton, 342

F

F & F Construction Co. v. Royal
 Globe Insurance Co., 199, 214
 First National Bank & Trust Co.
 v. Coling, 333, 420
 Fletcher Savings & Trust Co. v. American
 State Bank of Lawrenceburg, 202
 Fort v. White, 416
 Fort Wayne National Bank v. Scher, 420
 Foster v. Center Township, 345
 Frederiksen v. Poloway, 41
 Freson v. Combs, 200, 285 n.4

G

Garrity v. Lyle Stuart, Inc., 235
 Geiger & Peters, Inc. v. American Fletcher
 National Bank & Trust Co., 62, 326
 General Bargain Center v. American
 Alarm Co., 87
 General Finance Corp. v. Skinner, 37, 61
 Gerstein v. Pugh, 138
 Gibbs v. State, 273
 Gilbert v. Stone City Construction Co., 262
 Globe Valve Corp. v. Thomas, 433
 Goffredo v. Indiana State Department of
 Public Welfare, 14
 Goldberg v. Kelly, 7
 Golden v. Garafalo, 43
 Gordon v. Review Board of the Indiana
 Employment Security Division, 6
 Gower v. Gower, 185
 Griese-Traylor Corp. v. Lemmons, 58, 321
 Grisell v. Consolidated City of
 Indianapolis, 3

Guy v. Schuldt, 416

H

H.W.K. v. M.A.G., 189
 Hahn v. Ford Motor Co., 85
 Hales & Hunter Co. v. Norfolk
 & Western Railway, 69
 Hartwig v. Brademas, 290
 Hasty v. Hasty, 290
 Hiatt v. Brown, 392
 Hicks v. Fielman, 333, 420
 Hill v. State, 154
 Hines v. Behrens, 324
 Hodel v. Indiana, 299 n.75
 Holland v. Taylor, 221
 Hoosier Insurance Co. v. Mangino, 206
 Hoosier Plastics v. Westfield Savings
 & Loan Association, 322
 Howard v. City of Kokomo, 2
 Huff v. White Motor Corp., 250
 Hundt v. LaCrosse Grain Co., 64
 Husted v. McCloud, 279

I

In re CTS Corp., 34
In re Contempt Findings Against
 Schultz, 111
In re Deardorff, 268
In re Estate of Williams, 418
In re Frey, 334
In re G.L.A., 190
In re Harte, 335
In re Holtkamp, 335
In re Johnson, 335
In re Lintz West Side Lumber,
 Inc., 318, 335
In re Little Walnut Creek Conservancy
 District, 77
In re Maitlen, 334
In re Marriage of Bradley, 186
In re Marriage of Church, 185
In re Marriage of Ginsberg, 174
In re Marriage of Hudak, 329
In re Marriage of Hudson, 60
In re Marriage of Robbins, 74
In re Marriage of Taylor, 181
In re McKenna, 266
In re Miller, 335
In re Price, 268
In re Rex Printing, Inc., 335
In re Seely, 268
In re Thomas, 270
In re Walton, 267

In re Walz, 422
 Indiana Department of Revenue v.
 American Underwriters, Inc., 362
 Indiana Department of Revenue v.
 Glendale-Glenbrook Associates, 365
 Indiana Department of Revenue v.
 United States Steel Corp., 357
 Indiana Department of State Revenue
 v. Brown Boveri Corp., 359
 Indiana Department of State Revenue
 v. Estate of Hungate, 429
 Indiana Department of State Revenue
 v. Estate of Martindale, 429
 Indiana Department of State Revenue
 v. General Foods Corp., 21, 360
 Indiana Hospital Licensing Council v.
 Women's Pavilion of South Bend, Inc., 101
 Indiana & Michigan Electric Co.
 v. Pounds, 64
 International Brotherhood of Electrical
 Workers, Local 1400 v. Citizens Gas &
 Coke Utility, 230
 Isler v. Isler, 178

J

Jacks v. Duckworth, 113
 Jackson v. State, 165
 Johnson v. Moritz, 19
 Johnson v. State, 112
 Johnson County Memorial Hospital
 v. Schweiker, 344
 Josam Manufacturing Co. v. Ross,
 9, 68, 443

K

Kissinger v. Shoemaker, 173
 Kranda v. Houser-Norberg Medical
 Corp., 403
 Kreig v. Glassburn, 67
 Kryder v. State, 23
 Kuhn v. Kuhn, 180

L

L.W. Edison, Inc. v. Teagarden, 17
 Lance v. State, 274
 Lantis v. Astec Industries, 262
 Lash v. State, 167
 Lawson v. Kolender, 126
 Lehman v. Yellow Freight
 System, Inc., 104
 Lewandowski v. Beverly, 308

Lincoln National Bank v. Trust Co.
 v. Figel, 427
 Lippeatt v. Comet Coal & Clay Co., 299
 Lona v. Sosa, 438
 Lovely v. Cooper Industrial Products,
 440

M

Manns v. State, 273
 Markley v. State, 148
 Martin v. Shea, 383
 Mathews v. Eldridge, 171
 Mayberry v. Pennsylvania, 113
 McBride v. Soos, 116
 McCarty v. Sheets, 287
 McDaniel v. Sage, 441
 McGammon v. Youngstown Sheet and
 Tube Co., 441
 Meehan v. Meehan, 175
 Mennonite Board of Missions, Inc.
 v. Adams, 324
 Metropolitan Development Commission
 of Marion County v. Waffle House,
 Inc., 10
 Metropolitan Medical Center v. Harris,
 345
 Michiana Mack, Inc. v. Allendale Rural
 Fire Protection District, 93
 Michigan City Area Schools v.
 Siddall, 228
 Mills v. Electric Auto-Lite Co., 27
 Mills v. Habluetzel, 188
 Moore v. State, 273
 Munger v. State, 160

N

Nash v. State, 163
 National Mutual Insurance Co. v.
 Fincher, 216
 Natural Resources Commission of the
 Department of Natural Resources
 v. Sullivan, 5
 Neese v. Richen, 25
 Neswick v. Board of Commissioners, 21
 Noblesville Casting, Division of TRW,
 Inc. v. Prince, 444
 Noel v. General Finance Corp., 337

O

Oakhill Cemetary of Hammond, Inc.
 v. Tri-State Bank, 44
 O'Brien v. State, 115

Och v. State, 319
 Ohio Table Pad Co. v. Hogan, 227
 Olinger Construction Co. v. Mosbey, 436
 Otte v. Teßsman, 66
 Oxendine v. Public Service Co., 283 n.2

P

Park 100 Development Co. v. Indiana
 Department of State Revenue, 366
 Parrish v. Terre Haute Savings Bank,
 336
 Pasley v. American Underwriters, Inc.,
 332
 Patterson v. State, 191
 Pearson v. First National Bank, 322
 Perez v. United States Steel Corp., 11-13
 Perry v. NIPSCO, 387
 Perry Local Educators' Association
 v. Hohlt, 108
 Perry Township v. Hedrick, 347
 Peters v. Poor Sisters of Saint Francis
 Seraph, 229

R

Razo v. State, 203
 Reynolds Metals Co. v. Indiana
 Department of State Revenue, 361
 Richardson v. Citizens Gas & Coke
 Utility, 301
 Ricketts v. State, 163
 Rife v. State, 165
 Riverside Insurance Co. v. Pedigo, 208
 Rosander v. Copco Steel &
 Engineering Co., 398
 Rowland v. Amoco Oil Co., 318
 Rust v. Guinn, 396

S

Saint Mary of Nazareth Hospital Center
 v. Department of HHS, 345
 Santosky v. Kramer, 171
 Satterthwaite v. Estate of
 Satterthwaite, 420
 School City of East Chicago v. East
 Chicago Federation of Teachers,
 Local 511, 233
 Schuler v. Langdon, 327
 Sekerez v. Gehring, 75
 Seymour National Bank v. State,
 117, 411
 Shelby Federal Savings & Loan
 Association v. Doss, 322

Sheridan v. Town of Merrillville, 1
 Shettle v. Sheaver, 20
 Shettle v. Smith, 16
 Shoaf v. City of Lafayette, 2
 Shull v. State, 271
 Shumaker v. State, 166
 Smith v. Bruning Enterprises, 326
 Southwest Parke Education Association
 v. Southwest Parke Community School
 Trustee's Corp., 236
 Sowers v. Sowers, 75
 Sparkman v. State, 165
 Sports, Inc. v. Gilbert, 379
 Stanley v. Kelley, 226, 406
 Stanton v. Smith, 22, 346
 State Board of Tax Commissioners v.
 South Shore Marina, 18, 367
 State Department of Administration v.
 Sightes, 234
 State *ex rel.* Higbie v. Porter Circuit
 Court, 32, 332
 State *ex rel.* Indiana-Kentucky Electric
 Corp. v. Knox Circuit Court, 72
 State *ex rel.* Warzyniak v. Grenchik, 2
 State v. Cowdell, 340
 State v. Dively, 153
 State v. Frye, 68
 State v. Gillespie, 154
 State v. Ingram, 400
 State v. Kuespert, 69
 State v. Lewis, 71
 State v. Marion County Superior
 Court, 63
 State v. Meadowood Indiana University
 Retirement Community, Inc., 366
 State v. Totty, 63
 Statzell v. Gordon, 180, 330
 Suyemasa v. Myers, 59
 Swafford v. State, 149
 Swinney v. Swinney, 183

T

Talas v. Correct Piping Company,
 Inc., 13
 Templeton v. Sam Klain & Son, Inc., 327
 Texaco, Inc. v. Short, 298 n.75
 Tippecanoe Education Association v.
 Board of School Trustees, 237, 274
 Torres v. Meyer Paving Co., 326
 Tousely-Bixler Construction Co.
 v. Colgate Enterprises, Inc., 83
 Town of St. John v. Home Builders
 Association of Northern Indiana,
 Inc., 9

U

Underhill v. State, 193
Unger v. Indiana & Michigan Electric
Co., 283 n.2
United Farm Bureau Mutual Insurance
Co. v. Adams, 199
United States v. Board of School Com-
missioners of Indianapolis, 106
United States Steel Workers of America
v. Weber, 105
United Steelworkers of America v.
American Manufacturing Co., 231
Universal Camera Corp. v. NLRB, 17

W

Walker v. State, 161

Wallace v. State, 195
Wayne Adams Buick, Inc. v. Ference,
439
White v. Davis, 73, 331
White v. United States, 425
White Truck Sales v. Shelby National
Bank, 319
Wilfong v. Indiana Gas Co., 17
Williams v. Florida, 115
Williams v. State, 151, 155
Williams v. Williams, 40, 333, 419
Wilson v. Upchurch, 307
Wong v. Tabor, 275, 407
Workman v. Douglas, 310, 317

Z

Zack v. Smith, 336

Indiana Law Review

Volume 16

1982

ANNE SLAUGHTER
Editor-in-Chief

LESLIE ELIZABETH VAN NATTA
Executive Editor

BETTE J. DODD
CRAIG A. ETTER

BONNIE GALLIVAN
NINA KATHLEEN STINSON

Articles Editors

HOWARD L. SCHROTT

HELEN WITTY O'CONNELL

Managing Editors

JACKIE M. BENNETT, JR.
JAMES W. HEHNER
ELIZABETH ANN TOBEN

JULIE LYNN KILGORE
RICHARD C. RICHMOND
CYNTHIA S. WILLIAMS

Note and Development Editors

CYNTHIA MATSON ADAMS
ROBERT EDWARD ALLEN
MEG W. BABCOCK
GLENN D. BOWMAN
JANE WILLIAMS BRADSHAW
JAMES RICHARD CAMPBELL
BERT J. DAHM
JAMES DETAMORE
FRANKLIN N. DEWESTER
MARK E. DEYOUNG
SHEILA ANNE ELLIOTT
RONALD FULLER
MARK R. GALLIHER

HAROLD R. JOHNSTON
KEITH A. KINNEY
CHRISTOPHER D. LONG
JANE E. MAGNUS
JOSEPH MCGUIRE
TIMOTHY W. MOSER
NOVELLA L. NEDEFF
ANTHONY NIMMO
JAMES A. REED
MARY K. REEDER
MICHAEL C. RUBINO
BETH YOUNG

Associate Editors

PAUL J. GALANTI
W. WILLIAM HODES
Faculty Advisor

Indiana University School of Law—Indianapolis

1982-1983 ADMINISTRATIVE OFFICERS AND FACULTY

Administrative Officers

JOHN W. RYAN, *Ph.D.*, *President of the University*

GLENN W. IRWIN, JR., *M.D.*, *Vice-President*

GERALD L. BEPKO, *LL.M.*, *Dean*

G. KENT FRANSDEN, *J.D.*, *Associate Dean for Student Affairs*

JEFFREY W. GROVE, *J.D.*, *Acting Associate Dean for Academic Affairs*

Faculty

THOMAS B. ALLINGTON, *Professor. B.S., University of Nebraska, 1964; J.D., 1966; LL.M., New York University, 1971.*

EDWARD P. ARCHER, *Professor. B.M.E., Rensselaer Polytechnic Institute, 1958; J.D., Georgetown University, 1962; LL.M., 1964.*

JAMES F. BAILEY, III., *Associate Professor and Director of Law Library. A.B., University of Michigan, 1961; J.D., 1964; M.A.L.S., 1970.*

GERALD L. BEPKO, *Dean and Professor. B.S., Northern Illinois University, 1962; J.D., IIT/Chicago-Kent College of Law, 1965; LL.M., Yale University 1972.*

CLYDE HARRISON CROCKETT, *Professor. A.B., University of Texas, 1962; J.D., 1965; LL.M., University of London (The London School of Economics and Political Science), 1972.*

DEBRA A. FALENDER, *Associate Professor. A.B., Mount Holyoke College, 1979; J.D., Indiana University, 1975.*

WANDA D. FOSTER, *Assistant Professor. A.B., University of Michigan, 1973; J.D., Georgetown University, 1976.*

G. KENT FRANSDEN, *Associate Dean for Student Affairs and Associate Professor. B.S., Bradley University, 1950; J.D., Indiana University, 1965.*

DAVID A. FUNK, *Professor. A.B., College of Wooster, 1949; J.D., Case Western Reserve University, 1951; M.A., The Ohio State University 1968; LL.M., Case Western Reserve University, 1972; LL.M., Columbia University, 1973.*

PAUL J. GALANTI, *Professor. A.B., Bowdoin College, 1960; J.D., University of Chicago, 1963.*

HELEN P. GARFIELD, *Professor (on leave first semester, 1981-82). B.S.J., Northwestern University, 1945; J.D., University of Colorado, 1967.*

HAROLD GREENBERG, *Associate Professor. A.B., Temple University, 1959; J.D., University of Pennsylvania, 1962.*

JEFFREY W. GROVE, *Acting Associate Dean for Academic Affairs and Professor. A.B., Juniata College, 1965; J.D., George Washington University, 1969.*

WILLIAM F. HARVEY, *Carl M. Gray Professor of Law. A.B., University of Missouri, 1954; J.D., Georgetown University, 1959; LL.M., 1961.*

W. WILLIAM HODES, *Assistant Professor. A.B., Harvard College, 1966; J.D., Rutgers, Newark, 1969.*

LAWRENCE A. JEGEN, III., *Professor. A.B., Beloit College, 1956; J.D., The University of Michigan, 1959; M.B.A., 1960; LL.M., New York University, 1963.*

HENRY C. KARLSON, *Associate Professor. A.B., University of Illinois, 1965; J.D., 1968; LL.M., 1977.*

WILLIAM ANDREW KERR, *Professor (on leave, 1981-82). A.B., West Virginia University, 1955; J.D., 1957; LL.M. Harvard University, 1958; B.D., Duke University, 1968.*

WALTER W. KRIEGER, *Associate Professor. A.B., Bellarmine College, 1959; J.D., University of Louisville, 1962; LL.M., George Washington University, 1969.*

DAVID P. LEONARD, *Assistant Professor. B.A., University of California at San Diego, 1974; J.D., UCLA School of Law, 1977.*

WILLIAM E. MARSH, *Associate Professor. B.S., University of Nebraska, 1965; J.D., 1968.*

SUSANAH M. MEAD, *Assistant Professor. B.A., Smith College, 1969; J.D., Indiana University, 1976.*

MARY H. MITCHELL, *Assistant Professor. A.B., Butler University, 1975; J.D., Cornell Law School, 1978.*

- RITA M. NOVAK, *Assistant Professor. B.A., Albion College, 1972; J.D., De Paul University, 1978; LL.M., Columbia University, 1981.*
- MELVIN C. POLAND, *Professor. B.S., Kansas State University, 1940; LL.B., Washburn University, 1949; LL.M., The University of Michigan, 1950.*
- RONALD W. POLSTON, *Professor. B.S., Eastern Illinois University, 1953; LL.B., University of Illinois, 1958.*
- BRYAN M. SCHNEIDER, *Assistant Professor. B.A., Amherst College, 1973; J.D., University of South Carolina School of Law, 1976; LL.M., Yale Law School, 1980.*
- MARSHALL J. SEIDMAN, *Professor (on leave, 1981-82). B.S., University of Pennsylvania, 1947; J.D., Harvard University, 1950; LL.M., 1970.*
- KENNETH M. STROUD, *Professor. A.B., Indiana University, 1958; J.D., 1961.*
- BRADLEY J. TOBEN, *Assistant Professor. B.A., University of Missouri, 1974; J.D., Baylor University School of Law, 1977; LL.M., Harvard Law School 1981.*
- JAMES W. TORKE, *Professor. B.S., University of Wisconsin, 1963; J.D., 1968.*
- JAMES PATRICK WHITE, *Professor (on special assignment). A.B., University of Iowa, 1953; J.D., 1956; LL.M., George Washington University, 1959.*
- LAWRENCE P. WILKINS, *Associate Professor. B.A., The Ohio State University, 1968; J.D., Capital University Law School, 1973; LL.M., University of Texas School of Law, 1974.*
- HAROLD R. WOODARD, *Professorial Lecturer. B.S., Harvard University, 1933; J.D., 1936.*
- WILLIAM J. WOODWARD, *Assistant Professor. B.A., University of Pennsylvania, 1968; J.D., Rutgers-Camden, 1975.*

Emeriti

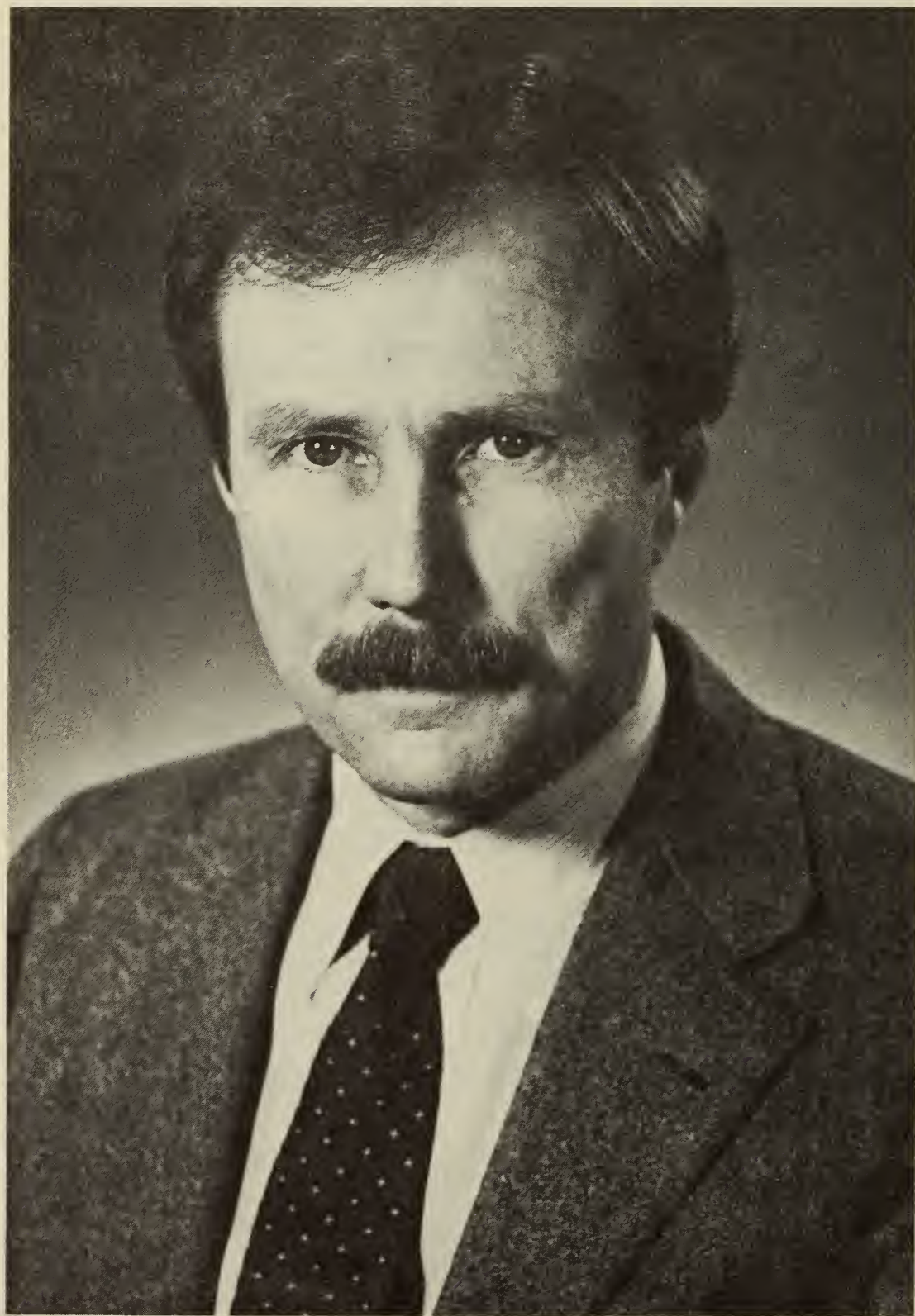
- AGNES P. BARRETT, *Associate Professor Emeritus. B.S., Indiana University, 1942; J.D., 1964.*
- CLEON H. FOUST, *Professor Emeritus. A.B., Wabash College, 1928; J.D., University of Arizona, 1933.*
- JOHN S. GRIMES, *Professor Jurisprudence Emeritus. A.B., Indiana University, 1929; J.D., 1931.*
- R. BRUCE TOWNSEND, *Cleon H. Foust Professor of Law Emeritus. A.B., Coe College, 1938; J.D., University of Iowa, 1940.*

Legal Writing Instructors

- CLARK ROBINSON, *Lecturer. A.B., Earlham College, 1966; M.A., Southern Illinois University-Carbondale, 1968; J.D., Indiana University, 1981.*
- JOAN RUHTENBERG, *Lecturer. B.A., Mississippi University for Women, 1959; J.D., Indiana University, 1980.*

Law Library Staff

- WENDELL E. JOHNTING, *Technical Services Librarian. A.B., Taylor University, 1974; M.L.S., Indiana University, 1975.*
- LAURA KIMBERLY, *Acquisitions/Serials Librarian. B.A., Florida State University, 1977; M.S., 1980.*
- CHRISTINE L. STEVENS, *Reference Librarian. A.B., Western Michigan University, 1970; M.L.S., Indiana University, 1971.*
- KATHY J. WELKER, *Assistant Director. A.B., Huntington College, 1969; M.L.S. Indiana University, 1972.*



DEAN GERALD L. BEPKO

Dedication

I met Gerald Bepko in 1970 when he decided to return to law teaching after his completion of an LL.M. degree at Yale Law School. To the great good fortune of this school, he joined the faculty at the Indiana University School of Law—Indianapolis. Instantly, Gerald Bepko became a favorite of both students and faculty, and his teaching has won multiple awards voted by the students themselves. Because he and I have appeared on many programs together, I have had the opportunity to observe the impressive talents he displays whenever he steps to the lectern (though I here disclaim any warranty of appreciation for the jokes that sometimes start his presentation).

In addition to being an outstanding professor, Gerald Bepko is a fine administrator. Organizations too numerous to list here have recognized his abilities and have enlisted his help year after year in keeping their affairs running smoothly. One example is the Federal Judges Association which has relied upon Gerald Bepko for a decade now. Another example is Gerald Bepko's recent appointment to the Indiana Conference of Commissioners on Uniform State Laws by Governor Robert Orr.

In choosing a new dean, Indiana University had the good sense to make Gerald Bepko the Dean of the Indianapolis Law School. In this day and age, it takes courage to be the dean of a law school, and it takes considerable talent to be successful in that position. Though his tenure in that role is still quite new, I am confident that Gerald Bepko, with his intelligence, persuasive abilities, extraordinary tact, and generous sense of humor, will one day occupy a proud niche in the law school's history.

Douglas J. Whaley
Professor of Law
Ohio State University
College of Law

